

# Guide to Tokyo - Nerima Toshimaen-Dori Avenue

Home of Warner Bros. Studio Tour Tokyo -  
The Making of Harry Potter



New

Rediscover Nerima, Tokyo

**This is where  
a new story begins**

Packed with the best spots  
in Nerima!

## Contents

- It's time for a long walk! A stroll around Nerima **Toshimaen-Dori Avenue Walking Course** ..... 04
- It's time for a foodie's world tour! **Toshimaen-Dori Avenue & Area Walking Map** ..... 06
- Unique shops and shopkeepers await your arrival! **Interesting Shops on Toshimaen-Dori Avenue** ..... 08
- Relax and take a well-deserved break **Relaxing in Nerima** ..... 10
- Bring something home! **Famous Nerima Souvenirs** ..... 11

## General Information

### Basic Info on Nerima City, Home to Toshimaen-Dori Avenue

#### Behind the Name

There are various theories behind the name Nerima as explained below:

1. It's location as a *neriba*, or spot where the red soil of the Kanto loam layer was kneaded,
2. As a *nenuma*, or spot where there were many marshes in the lowlands deep in the Shakujii River basin,
3. The location of a post town called Norinuma in the Musashi province during the Nara period (710 - 794 CE),
4. For a famous vassal horseman of the Toshima clan during the middle ages who domesticated horses (Neru (domesticate) + ma (horse)).

#### City Crest

The city crest is a combination of a stylized katakana character "Ne" and a horse hoof. It was created in 1953 with the goal of developing Nerima as a peaceful, healthy, and cheerful city.



#### City Flower and Tree

In 1971, Nerima asked residents to vote for a tree and flower that would symbolize the city, and they chose the azalea and magnolia kobus as the official flower and tree, respectively. Just a few steps from the North Entrance of Nerima Station, visitors will find Heisei Tsutsuji Park, which is home to 10,000 azaleas representing some 600 varieties. The large white flowers that bloom on the magnolia kobus trees from March to April are a familiar sight to residents, inspiring the name of the Nerima Kobushi Half Marathon (*Kobushi* being the Japanese name of the tree).



#### Location, Area, and Topography

Nerima City is located in the northwest section of Tokyo's 23 special wards. It measures nearly 10 kilometers from east to west and about 4 to 7 kilometers from south to north, making it roughly rectangular and covering 48.08 square kilometers. Topographically, it becomes lower from the west to east side. Nerima is between approximately 30 and 50 meters above sea level and is relatively flat.

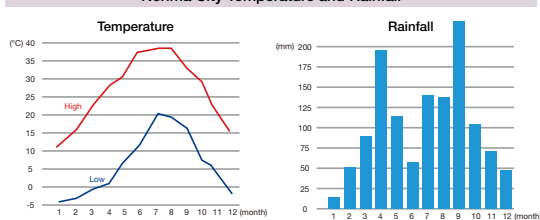
#### Population

Nerima is home to 739,757 people in 387,313 households. It is the second most populous of Tokyo's 23 special wards after Setagaya City, and boasts the third highest number of households. (Data as of April 1, 2023)

#### Climate

The average annual temperature is around 16°C, with high temperatures exceeding 30°C on some days from May to September. It has an annual average rainfall of 108 mm with September being the rainiest month.

Nerima City Temperature and Rainfall



From 2022 Japan Meteorological Agency weather statistics

#### City Data Symbols

- Address
- Phone
- Operating hours
- Holidays
- Fee
- Website
- Social media accounts

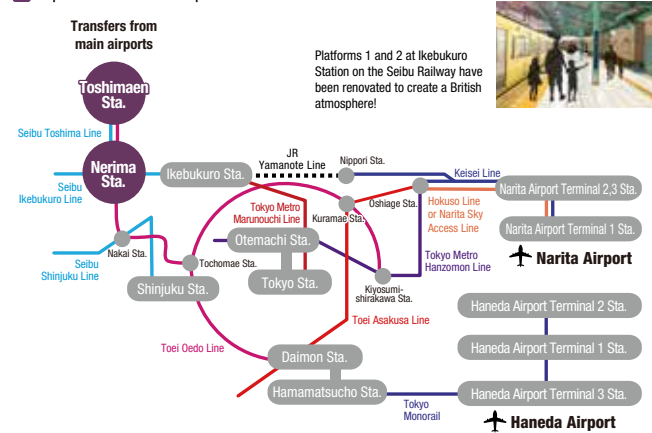
### Travel Time from Major Airports

#### From Haneda Airport

**[By Train]** About 1 hour 10 minutes to Nerima Station (Tokyo Monorail → Toei Oedo Line)  
**[By Bus]** About 1 hour to Nerima Station (Limousine Bus: Hikarigaoka-Nerima-Haneda Airport Line)  
<https://webservice.limousinebus.co.jp/web/>

#### From Narita Airport

**[By Train]** About 1 hour 30 minutes to Nerima Station (Keisei Skyliner → JR Yamanote Line → Seibu Ikebukuro Line)  
**[By Bus + Train]** About 2 hours to Nerima Station — About 1 hour 40 minutes by bus to Ikebukuro (Kokusai Kogyo Bus: Narita Shuttle Ikebukuro Line), about 10 minutes by train from Ikebukuro Station to Nerima Station (Seibu Ikebukuro Line)  
<https://5931bus.com/airportbus/detail/naritashuttle.html>



### Tourist Information Centers

There are two tourist information centers in Nerima City.

#### Nerima Tourist Information Center

Coconeri 3rd floor, 1-17-1 Nerima, Nerima, Tokyo  
**Directions:** Close to the Nerima Station Central North Entrance

#### Shakujii Tourist Information Center

3-23-8 Shakujii-machi, Nerima, Tokyo  
**Directions:** Close to the Shakujii-koen Station Central Entrance



### Tourist Information Centers

### NERIMARU

This is the official Nerima City animation character designed on the concept of Nerima daikon radishes and the character meaning "horse" from the city name. NERIMARU's mission is to promote "Nerima City - The Anime Town" to the world at large. NERIMARU always ends sentences with "neri."



©2011 Nerima City Nerimaru

### Official Animation Character

### Nerima Free Wi-Fi

Free Wi-Fi spots are available near Nerima Station, one being Heisei Tsutsuji Park. Make sure to download the app so you can use this service!  
<https://www.ntt-bp.net/jcfw/use/ja.html>



### Wi-Fi Spots



# Toshimaen-Dori Avenue Walking Course

Toshimaen-Dori Avenue, one of the city's main streets, is a popular area lately. Walk the street from north to south and find your very own favorite spots and eateries!



**START !!**

## Nerima Station



6 min. walk

## Spot 1 Nerima Hakusan-jinja Shrine

練馬白山神社

This shrine is home to the Big Zelkova Tree designated by the Japanese government as a natural monument. Although the date of its founding is unknown, a monument unearthed on the site suggests it was built in the Heian period (794 - 1185). Normally there are no staff at the shrine, so if you want a red seal stamp to commemorate your visit, head to the Nakano Numabukuro Hikawa-jinja Shrine.

- 📍 4-1-2 Nerima, Nerima, Tokyo
- ☎ 03-3991-2888 (Hours: 9:00 am - 5:00 pm)
- 🕒 24 hours
- 🗓 Open 365 days a year
- 🌐 <https://nerimahakusan.or.jp/>



The Big Zelkova Tree, which serves as the symbol of Nerima Hakusan-jinja Shrine, is estimated to be 900 years old.

8 min. walk

Many stone structures, such as the statues of the guardian dogs dedicated to the shrine in the Edo period (1603 - 1867), can still be seen here.

11 min. walk

## Spot 2 Shimuradenki Coffee Roaster

志村電機珈琲焙煎所

This new type of café combines the town electrical appliance store with a coffee roastery. Raw beans are roasted to your preferred flavor in about 5 minutes and sold by weight in units of 100 grams. They also have a wide selection of café menu items including coffee crafted by coffee meister, cake, and baked sweets which can be enjoyed in the shop.

- 📍 1-11-1 Kasuga-cho, Nerima, Tokyo
- ☎ 03-3990-5560
- 🕒 9:00 am - 7:30 pm
- 🗓 Thursdays
- 🌐 <https://www.simdencoffee.com/>



The adorable café latte art is popular!

The coffee gelatin topped with latte soft serve is the perfect mix of mildly bitter and milky flavors.



This is our signature dish!



You'll find nearly 35 varieties of specialty coffees in the shop.



Come see the Japanese garden which incorporates the natural height differences of the landscape.

## Spot 3 Nerima Koyama Garden

練馬区立 向山庭園

This is the only Japanese-style cultural facility in Nerima City, and it is home to a garden and teahouse. Both the garden and building were renovated by architect Hiroshi Naito. The existing valley-shaped geography, trees, and ponds are blended into the garden for a wonderful spot where you can truly appreciate the change of seasons.

- 📍 3-1-21 Koyama, Nerima, Tokyo
- ☎ 03-3926-7810
- 🕒 Facility hours: 9:00 am - 9:30 pm, garden walking hours: 9:00 am - 5:00 pm
- 🗓 December 29 to January 3
- 🆓 Free (Fees apply for room rentals)
- 🌐 <https://www.kouyama-teien.info/>



6 min. walk

## Spot 4 THE GIANT STEP

Choose from three hamburger styles, the New York, Original (broccoli), and Classic. Stop by for a burger with patties made of coarse ground beef packed with umami that match perfectly with Blenheim Ginger Ale, known as the spiciest ginger ale in the world!

- 📍 #102, 4-12-17 Nerima, Nerima, Tokyo
- ☎ 03-6767-1129
- 🕒 Tuesday through Thursday: 11:00 am - 4:00 pm (L.O.), Fridays, weekends, and holidays: 11:00 am - 8:00 pm (L.O.)
- 🗓 Mondays and 5th Tuesday of the month
- 🌐 <https://www.the-giant-step.com/>



This burger shop incorporates vintage décor for a classy atmosphere.



Try the Original style mushroom cheeseburger!

Lastly, don't forget to order some carrot cake ice cream!



3 min. walk

## Spot 5 Gelateria YoiYoi: Alcohol-based Gelato

アルコールジェラート専門店Gelateria YoiYoi

This adult gelateria was created by the owner and bartender at sister shop Dining & Bar Toshimarin (P. 9). Each cocktail-like gelato variety has deep flavors. If you're not fond of alcohol, feel free to try the non-alcoholic versions.

- 📍 Legato Toshimaen 1st floor, 4-24-11 Nerima, Nerima, Tokyo
- ☎ 03-4400-5544
- 🕒 3:00 pm - 1:00 am the following day, 12:00 pm - 1:00 am the following day on weekends
- 🗓 Tuesdays, irregular days
- 🌐 <https://gelateria-yoiyoi.shopinfo.jp/>



Try the standard Moscow Mule and other limited time gelato flavors.

Toshimarin also offers gelato!



1 min. walk



## Toshimaen Station

**GOAL !!**

It's time for a foodie's world tour!

10 minute walking distance from Toshimaen Station

# Toshimaen-Dori Avenue



There are lots of shops along Toshimaen-Dori Avenue and the surrounding area. Let's take a walk and find some!

## Directions to Toshimaen-Dori Avenue

Toshimaen-Dori Avenue is a Nerima City street that stretches in a north-south direction on the east side of the city. It runs from the west of Nerima Station to the East of Toshimaen Station. These spots are most easily accessible from Toshimaen Station.



Just a one minute walk from Seibu Toshima Line Toshimaen Station, renovated in April 2023 on the concept of blending imagination with the everyday.



Located right in front of the Toshimaen Station exit on the Oedo Line.

Toshimaen-Dori Avenue stretches in a north-south direction in Nerima City, Tokyo. Despite being in Nerima rather than Toshima City, why is it called "Toshima" along with the famous Toshimaen amusement park that used to be here, and Toshimaen Station on the Seibu Toshima and Toei Oedo Lines? To find out, we need to go back to the Muromachi period (1336 - 1573), when the Toshima clan built Nerima Castle, an outer citadel of Shakuji River. Legend has it that during the Taisho era (1912 - 1926), entrepreneur Yoshisaburo Fujita, who owned the land where the ruins of the castle was located, opened a park and called it "Toshimaen" after the clan.

In the area around current day Toshimaen-Dori Avenue, you'll find a natural hot spring at Toshimaen Garden Spa (P. 10), United Cinemas movie theater, and Tokyo Nerima Joshi Park, part of which opens in 2023. The area continues to develop as a great spot with enough highlights to fill an entire day. It is also home to an increasing number of great eateries.

Just one street over from Toshimaen-Dori Avenue visitors will find a quiet residential neighborhood. Despite being just 20 minutes away from major areas such as Shinjuku and Ikebukuro, this charming, mellow neighborhood has the relaxed feel of everyday living. Come experience all the charms rooted in local living that the Toshimaen-Dori Avenue area has to offer.



The boardwalk along the Shakuji River is home to hidden cherry blossom viewing spots! This is a lively area from late March to early April.



Conceptual image of the entrance  
 \*Warding World\* and all related names, characters and indicia are trademarks of and © Warner Bros. Entertainment Inc. -Warding World publishing rights © J.K. Rowling.  
 Warner Bros. Studio Tour Tokyo - The Making of Harry Potter is the second facility in the world and the first in Asia to offer a behind the scenes experience of the Harry Potter and Fantastic Beasts series productions.

## A full selection of foods!

<p><b>Local Chinese food</b></p> <p><b>1 Hong Kong Hanten</b> 香港飯店</p> <p>This local Chinese eatery offers a varied menu including ramen and fried rice. The mini ramen set meal is popular.</p>	<p><b>Yakitori</b></p> <p><b>2 Shoten Yakitori Ikki - In front of Toshimaen Station</b> 豊島園駅前 笑天やきとり一輝</p> <p>This yakitori shop serves delectable chicken skewers that will make you hungry the moment you smell them. Enjoy a beer with over 10 varieties of yakitori!</p>	<p><b>Sushi</b></p> <p><b>3 Kame Sushi</b> 亀寿司</p> <p>This is a sushi shop for the masses. Come here for fresh fish straight from Toyosu Market at reasonable prices.</p>	<p><b>Authentic Sichuan cuisine</b></p> <p><b>4 111 (Ichi Ichi Ichi)</b> 111(イチイチイチ)</p> <p>Here you'll find food made with original seasonings that deliver a spicy punch and complex flavors. Enjoy homemade dim sum at night!</p>	<p><b>Asian food stall</b></p> <p><b>5 Asian Food Stall LOTUS</b> アジアの屋台飯LOTUS</p> <p>Choose from a wide selection of plate meals including banh mi, com ga chicken rice with rice cooked in chicken broth, and more.</p>
--	--	---	--	---

Other foods include curry, medicinal cooking, Italian, dining bars, cafes, and more! (P. 8 - 10)



Take in panoramic views of Nerima City from city office. On clear days, beautiful Mt. Fuji is easily visible!



Unique shops and shopkeepers await your arrival!

# Interesting Shops on Toshimaen-Dori Avenue

Toshimaen-Dori Avenue is packed with restaurants offering delicious dishes, and with unique, energetic shopkeepers! Keep an eye out for fun encounters that will make for a memorable trip.



### Colorful Vegetable Beef Shank Curry

This curry is packed with vegetables such as baby corn, okra, tomatoes, eggplant, and corn.

There are lots of solo diners here, so feel free to stop by!



### Cozy curry & dining bar TOMMY'S HOUSE

The best thing about this restaurant is the casual, cozy atmosphere. Dining here is like spending time at a friend's home. The signature dish is Beef Shank Curry which is slowly cooked until the meat melts in your mouth. This dish is popular with people of all ages for the sweetness of the meat and not-too-spicy flavor.

- 3-17-2 Nerima, Nerima, Tokyo
- 03-6914-7269
- 11:30 am - 2:30 pm (L.O.: 2:00 pm), 5:30 - 10:30 pm (L.O.: 10:00 pm)
- Thursdays
- <https://tommyshouse1208.amebaownd.com/>



Keep an eye out for the white walls and yellow sign that suddenly appears out of nowhere in the corner of a residential neighborhood!



### Various whiskeys

A variety of domestic and foreign whiskeys are served here. Many customers enjoy a drink and then a curry.

There is also a flavor transformation set meal where you can mix spices as you like.



### Yakuzen Soup (gelatin noodles)

White chicken meat, black cloud ear mushroom, greens, and sweet potatoes are popular toppings.



Even kids enjoy this!

Medicinal cooking that is good for the mind and body

### Nanahachi Medicinal Cuisine

薬膳めし専門店 ナナハチ

This medicinal cuisine restaurant was started by staff with certifications in international medicinal cooking and nutrition. Diners can choose the spiciness of the soup, from gelatin noodles or rice porridge as their main dish, and a topping for a unique Nanahachi style dish. The chewy, domestically-produced gluten-free gelatin noodles are addictive!

- 101, Kyolin Building, 3-17-1 Nerima, Nerima, Tokyo
- 070-8567-4754
- 11:00 am - 9:00 pm
- Irregular days
- <https://778yakuzen.com/>



This restaurant offers counter seating and comfy terrace tables.

Enjoy a delectable combination of food and spirits

### DINING & BAR TOSHIMARIN

DINING & BAR としまりん

This hidden gem of a dining bar is run by a husband and wife team. They offer over 300 drinks including craft beer, wine, and cocktails, and have a food menu with over 50 items to match with your favorite drink. This is the perfect restaurant for any occasion.

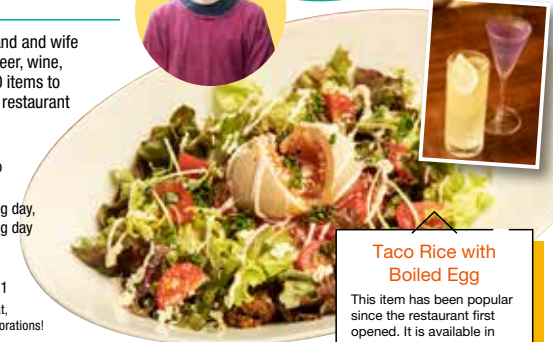


- 4-22-11 Nerima, Nerima, Tokyo
  - 03-3994-3566
  - 6:00 pm - 3:00 am the following day, 5:00 pm - 3:00 am the following day on weekends
  - Tuesdays, irregular days
  - <https://twitter.com/toshimarin1>
- The sign features the owners' beloved cat, and the interior is packed with feline decorations!



Please come try a cocktail paired with food!

The husband is a bartender and will make the perfect cocktail to match your food order.



### Taco Rice with Boiled Egg

This item has been popular since the restaurant first opened. It is available in regular and mini size.



### Assorted Antipasto + Lunch Set

This set meal includes five antipasto dishes, your choice of pasta or pizza as a main dish, homemade bread, and a beverage.

The colorful antipasto are carefully made one at a time for uncompromising flavor.

Casual and incredibly satisfying lunches

### Urban Oasis Tanaka

This casual restaurant offers Italian food. Don't miss the set lunch meal, which comes with assorted antipasto. Many regular customers come specifically for the reasonable antipasto which is made with care and attention by the chef.

- Maison Hanabusa, 4-12-17 Nerima, Nerima, Tokyo
- 03-3991-2630
- 11:30 am - 3:00 pm, from 6:00 pm (only open for lunch on Tuesdays)
- Mondays



Relax in the chic atmosphere of this restaurant, which gets plenty of natural light during lunchtime.

A Unique Shop with Two Personalities

### Nakamachi Frozen Treats Shop/Revolver (Kari)

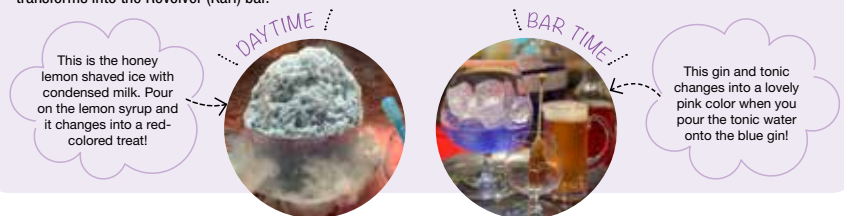
中町氷菓店/リボルバー(仮)

This casual standing bar opened in 2021. In spring 2022 they began offering the ultimate fluffy shaved ice made with natural spring water from the Southern Alps in Yamanashi. During the day it operates as a frozen treats shop and at night, it transforms into the Revolver (Kari) bar.

- Room# 66 Parkside, 4-18-13 Nerima, Nerima, Tokyo
- 03-6761-6666
- Shaved ice: 11:00 am - 4:00 pm, Bar: 5:00 pm - 12:00 am
- Wednesdays
- Nakamachi Frozen Treats Shop @nakamachi\_ice\_toshimaen
- Revolver (Kari) @revolver57921



Keep an eye out for the banner that has "Natural Ice" in large characters and the red and white sign.



This is the honey lemon shaved ice with condensed milk. Pour on the lemon syrup and it changes into a red-colored treat!

This gin and tonic changes into a lovely pink color when you pour the tonic water onto the blue gin!



Relax and take  
a well-deserved break

# Relaxing in Nerima

In this section we're going to take a look at some great spots for a break while strolling around town. When the mood strikes, kick back, relax, and enjoy making memories of your trip.

This tart-style cake has a mildly sweet flavor and crispy texture.



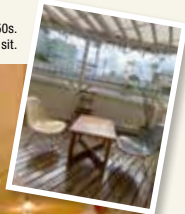
Relax in the natural, comfy atmosphere of this café.

## Give your mind and body a treat titi cafe

This café and dining establishment is certified to serve organic meals. They offer a selection of food and drinks that are a treat for both body and mind.

- Meze Toshimaen Nigokan 2nd floor, 4-19-7 Nerima, Nerima, Tokyo
- 03-6914-5742
- 11:30 am - 5:00 pm (Open until 9:00 pm on Saturdays and 7:00 pm on Sundays)
- Thursdays
- <https://www.titi-cafe.net/index.html>

This shop features a collection of antique furniture from the 1950s. The spacious terrace is also a great place to sit.



Choose from a selection of vegan bread.



## Enjoy some vegan bread Bakery Old Kitchen Organic

This bakery uses organic ingredients whenever possible. Their food is made with zero additives, preservatives, food coloring, or synthetic flavorings and minimal seasoning so you can enjoy the true flavor of the wheat and other ingredients.



- Daini Funsuiso, 1-2-25 Kasuga-cho, Nerima, Tokyo
- 03-3998-2266
- 10:00 am - 6:00 pm
- Mondays and Tuesdays (Closed one Wednesday a month)



Reservations are required for indoor café service. Regular classes are also held here.

## Satisfy your heart and soul with the perfect cup of coffee

### Kakurenbou Coffee 自家焙煎珈琲 隠房

In addition to selling specialty coffee beans roasted in house, they offer painstakingly brewed hand drip coffee and richly aromatic CoolCoffee® (iced coffee).

- Miyama Building 1st floor, 4-20-3 Nerima, Nerima, Tokyo
- 03-6914-7248
- Beans and equipment sales: 12:00 - 7:00 pm, Café: 12:00 - 6:00 pm (L.O.: 5:30 pm)
- Tuesdays
- <https://www.kakurenbou.jp/index.html>

## A Quiet Spa for Adults Surrounded by Nature



This incredibly spacious outdoor jacuzzi filled with natural hot spring water is situated in the middle of a green Japanese garden.

<https://www.seibu-leisure.co.jp/niwanoyu/index.html>

### Toshimaen Garden Spa 豊島園 庭の湯

This spa overlooks a Japanese garden designed by renowned Japanese landscape architect Kenzo Ogata, and spreads out over 3,960 square meters. Here you can enjoy natural hot springs, a bade pool, and saunas.

Bring  
something  
home!

# Famous Nerima Souvenirs



Why not bring home some items from the famous Nerima City Nerikore collection for a memorable souvenir of your trip? Check below for some cute, easy to carry items!

## Nerima Sable Cookies

Chikushido ①  
竹紫堂



## Handmade Monaka Kimuraya no Daikon

Kimuraya ②  
御菓子司 木村家

## Nerima Daikon Monaka

Eisen ④  
栄泉



## Nerima no Neriaruki Sable Cookies

Pâtisserie Française Lorraine ⑤  
ロレーヌ洋菓子店

## le mimi Bonbon's Oiri & Ramune

Vice Versa ③  
ヴァイスヴァーサ



## Tokyo Nerima Honey

Tokyo Hyakka Bee Farm ⑥  
東京百花みつばち園



Buy them here!



## Nerima Tourist Information Center

- Coconeri 3rd floor, 1-17-1 Nerima, Nerima, Tokyo
- 03-3991-8101
- 9:00 am - 9:00 pm
- December 29 to January 3
- [https://www.nerimakanko.jp/news/detail.php?notice\\_id=N000000021](https://www.nerimakanko.jp/news/detail.php?notice_id=N000000021)

Pick and choose to  
match your budget

- ① Sable cookie shaped like Nerima City made with daikon radish leaves grown in Nerima
- ② Handmade monaka featuring wafers made with Nerima daikon radish leaves
- ③ Cute oiri and ramune candy in pastel colors
- ④ Unique monaka shaped like Nerima daikon radish
- ⑤ Foot-shaped sable cookies that are mildly sweet and made with eggs produced in Nerima
- ⑥ Rich, fruity honey produced in Nerima

## Nerima's Column

### Nerima City is an "Agricultural Kingdom" close to central Tokyo

Despite being situated close to the metropolis of central Tokyo, Nerima City is home to agriculture that is a close part of everyday living. The city is home to about 182.3 hectares of farmland, accounting for nearly 40% of all agricultural land in Tokyo's 23 wards. Some of our most famous crops are cabbage, and we produce the most of anywhere in Tokyo. We also grow Nerima daikon radish, a traditional Nerima City vegetable whose cultivation began in the Edo period and was revived in 1989. In addition to these, various fruits, vegetables, and flowers are cultivated each season.



NERIMA-111056



STREET-IN-NERIMA-11056

定価 : PRICELESS

(本体 0 円 + 税 0%)



NERIMA-WELCOME-2023



Harvest some vegetables!



Enjoy a guided botanical tour!



# Welcome to a Leisurely Tour of Nerima



Nerima City is home to nearly 740,000 residents and an abundance of greenery.

Don't you want to find out why so many people love it here?

Keep your eye out for the little charms this city has to offer.

It's also conveniently accessible from central Tokyo!



Take backyard tours!

**A special day in Nerima** 🎵

**Day trip  
tours**

**Up to 50% OFF!**



**[Inquiries]** POCKET CULTURE Customer Service Center

9:00 am - 1:00 pm  
on weekdays  
(closed weekends and holidays)

**03-5652-7072**

<https://www.nerimakanko.jp/tour-top/> (Japanese only)

Scan the  
**QR code** for  
applicable tours!

